

## DG-3 specifications

Image capture elements	1/1.75 inch interlace scanning CCD (Aspect ratio 3:2 RGB original color filter square pixel)
Pixels	Total pixels    Approx. 2,300,000 pixels (1901 x 1212)
	Effective pixels   Approx. 2,160,000 pixels (1816 x 1208)
Mount	Scalar DG mount (based on C mount when C mount adapter attached)
Shutter speed	1/45-4 seconds
Storage medium	CF Memory card
	NORM mode: 1792 x 1184 pixels Approx. 500KB
	FINE mode: 1792 x 1184 pixels Approx. 900KB
	ZOOM mode: 896 x 592 pixels Approx. 500KB
Monitor	Type-3.5 230,000 pixel amorphous TFT LCD (dot: 960 x 230)
Video output	NTSC
VIDEOOUT terminal	3.5φ monaural jack (LCD monitor side)
REMOTE terminal (also used for external synchronous strobe)	2.5φ stereo jack
DC IN terminal	EIAJ Standard Type-2 (DC jack center-plus)
Light off/on switch	Light A, light B interchangeable (when dual function lenses are used)

Input voltage	DC6.0V±5% 1A 6.0V~7.2V±5% when running on batteries
Power consumption	Approx. 6W when only the body is running
Dimensions	98 x 201.5 x 68mm
Battery running time	1-1.5 hours depending on the user's setting
	1 hour for successive recording (depending on the user's setting)
LED for power check	Power on...green LED light on
	Low battery...red LED light on
	Power OFF...both LED lights off
Estimated number of recorded images on CF memory card (numbers subject to change depending on images)	NORM mode: Approx. 638 images on a 256MB card
	FINE mode: Approx. 283 images on a 256MB card
	ZOOM mode: Approx. 638 images on a 256MB card
Weight	Approx. 370g (body only) Approx. 490g (when battery and CF card are attached)
Installation screw	Camera screw
Use environment	Temperature 0-40°C
Storage environment	Temperature -10-55°C
Operation and storage humidity	30-85% (condensation not permitted)
Output voltage	5V Maximum output current 250mA

Cordless digital microscope

# DG-3

2,300,000 pixel portable  
digital microscope

## DG-3

The basic set

- ▶ Body (DG-3)
- ▶ Lithium-ion battery
- ▶ AC adapter and battery charger
- ▶ CF memory card (256MB)
- ▶ C mount adapter
- ▶ DC-DC cable
- ▶ Video cable
- ▶ Carrying case

\* All lenses are considered as options  
to make sure you begin with the correct lens.



NEW

 **QUALITEST**  
WWW.WORLDOFTEST.COM

Qualitest North America  
Toll-Free: 1.877.884.TEST (8378)  
Fax: 954.697.8211  
Email: info@qualitest-inc.com

Locations:  
USA: Buffalo, NY - Ft. Lauderdale, FL - California  
Canada: Toronto  
UAE: Dubai  
Asia: Hong Kong

\* The contents of this catalog are as of November 2005.  
\* Product specification and design may change without notice due to product improvement.

# Technology for all your applications.

## NEW

- Images are displayed on a larger, easily viewable 3.5 in. monitor.
- This 230,000 pixel high-speed LCD monitor is mounted on the main body.
- Capable of 30 frames per second.



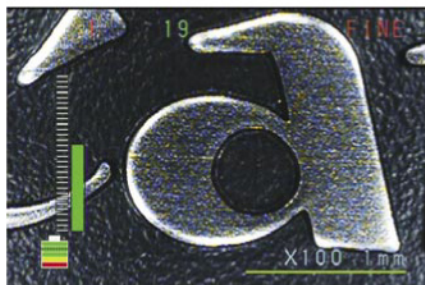
## NEW

- The size is clearly indicated by scale and magnification displays!
- Reliable image management.
- The scale and magnification are displayed on the monitor and may be recorded onto the image for future reference.
- May be used as an indication of the size of the object, or to clarify the magnitude used for image capturing.



## NEW

- The unit is equipped with a 2X button to zoom-in to check for proper focus and to view in more detail.
- It also comes with a focus bar to indicate the degree of focus.
- These features allow anyone to capture sharp images with ease.



- A large array of lenses make the DG-3 a superb tool for capturing images on nearly any surface.
- The DG-3 has a C-mount adapter which will allow you to connect C-mount lenses, fiber scopes, microscopes, etc.
- Choose from 3 different stands to fit your application.



## Feature 1

Easily portable at only 500g.  
Lithium-Ion battery driven.  
No cords needed.  
Image anywhere. AC Adapter provided.



## Feature 2

Touch & View™ technology.  
No longer do you need to take the sample to the lab.  
Capture images on site. Minimize down-time.  
Maximize profits.



## Feature 3

The LCD panel has a video output to allow many people to observe the images on a monitor.

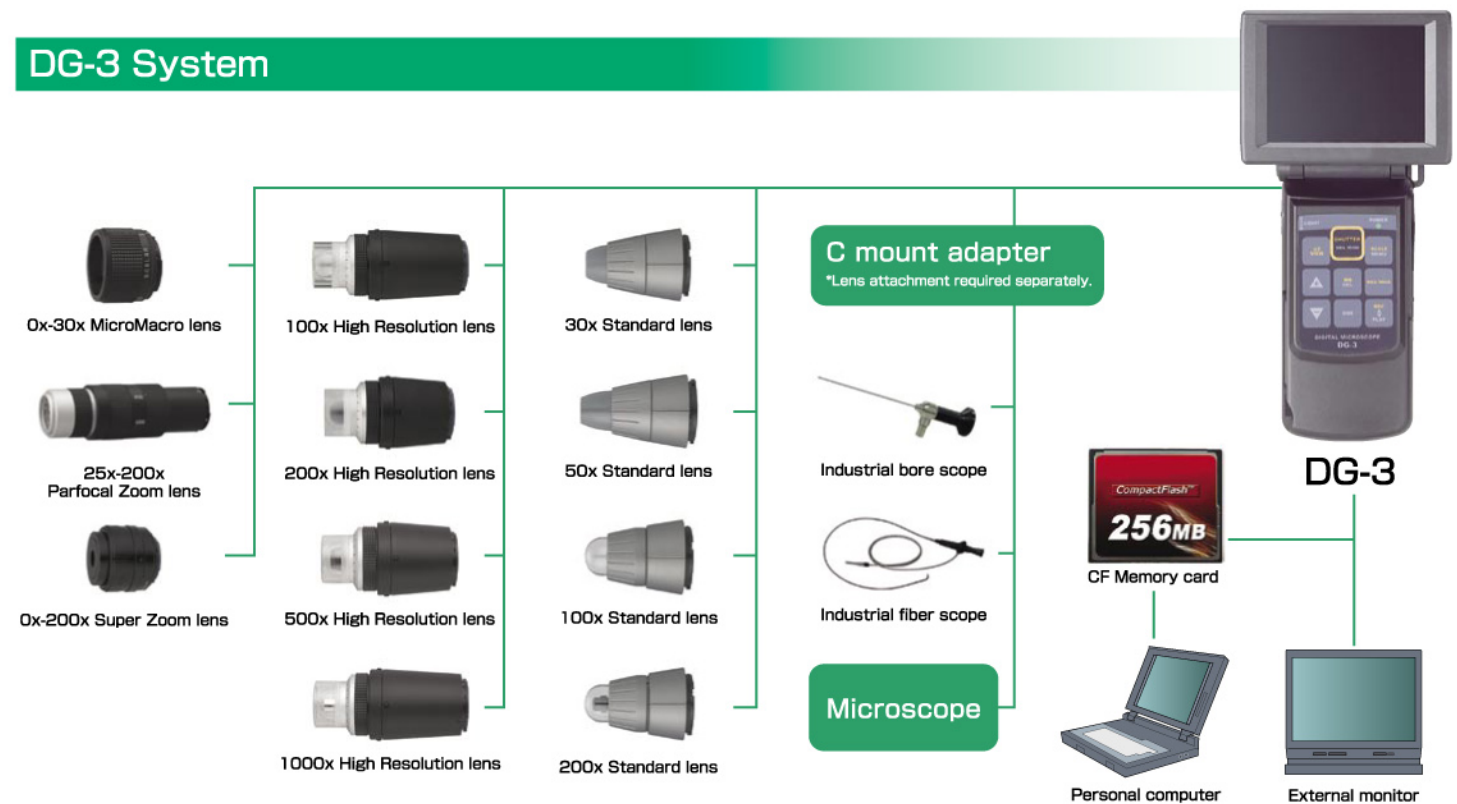


## Feature 4

Data is recorded on a CF card.  
Enhance any report with graphic images.



## DG-3 System



## Stands and stand adapters lineup

